



# all4me

WEAR THE BEST SPARKLE THE MOST

**We have everything you need to get you  
stage ready!**





# Contents

- 03.** ABOUT US AND A WORD FROM ANNE
- 04.** FABRICS
- 05.** CONNECTORS
- 06.** CRYSTALS
- 09.** BIKINI TOP STYLES
- 16.** BIKINI PANT STYLES
- 19.** BUM COVERAGE
- 20.** FIGURE SUIT BIKINI STYLES
- 23.** FIGURE PANT OPTIONS
- 25.** FIGURE BUM COVERAGE
- 26.** WBFF COUTURE BIKINIS
- 27.** ONE PIECE SWIMSUIT MODEL
- 34.** ALL4ME THEMEWEAR
- 35.** CUSTOM HEELS, HEADPIECES, PROPS AND JEWELLERY
- 37.** POSING SUITS/ PRACTICE BIKINIS
- 38.** BODY BUILDING TRUNKS
- 40.** WBFF SQUARE TRUNKS
- 46.** STAGE HEELS
- 47.** WBFF HEELS
- 48.** FAQs
- 49.** CONTACT

# About Us and a Word from Anne

---

So, you have made the commitment to get on stage – Go you!

Now it's the time to start planning for that all important moment when you get to walk out and show off all your hard work – that's where my team comes in!

All4me Bespoke Bikini and Themewear is lovingly handcrafted and custom made just for you. We take pride in providing you with stage wear that is not only unique but ensures that you stand out on stage. To do this we only use the very best luxe fabrics, Swarovski Crystals and highest quality trims and connectors, which we source from our trusted suppliers.

If you do not live in Australia and can't come visit our Gold Coast Showroom – don't stress we ship worldwide, and have you covered.

You spend weeks, even months, working for the perfect physique and this is why your bikini must be perfect and show off your body to the optimum level.

We have over 10 years' experience in designing and creating stage wear and are proud sponsors of the WBFF Australia and New Zealand shows. My aim will always be to ensure you step on stage feeling absolutely amazing and confident in the fact that your bikini has been custom created just for you and will enhance your body to perfection.

Love from Anne and the All4Me Team

xxx





# Fabrics

---

We only use genuine mystique & lycra fabrics.

We do not use poor quality fabrics that are likely to stretch/sag or have the sheen rub off!

**We have over 200 colours for you to choose from - you can see our colour section [here](#).**

If there is a particular colour or fabric you would like but can't see it on our website, if it is available, we are happy to source it for you.



# Connectors

---

Our connectors are all sourced from our trusted suppliers in America. They are by far the best quality connectors that we have found in our ten years of working in the industry.

**A comprehensive list of connectors are available on our website – you can see view them [here](#).**



## What should I think about when I select a connector for my bikini?

1. Federation- IFBB and ICN both prefer the simple/straight connectors (nothing too dangly).
2. Whilst the wider connectors look great on the hips, it's usually better to choose a thinner connector for the neck. If you are worried about matching pant and neck connectors, then send us a quick message and we'll be able to help.
3. If you are quite lean then the best connector by far for both pant and neck is the single SS29 connector. This connector has plenty of sparkle but not so busy that it detracts from your body.

# Crystals

---



Swarovski all the way! Nothing sparkles like Swarovski Crystals. For the standard competition bikinis ALL4ME only uses Swarovski Crystals



If designing a couture bikini for WBFF, there is a lot of additional design and texture to these bikinis which call for the use of additional/other crystals/ beads/embellishments – BUT all bikinis will be predominantly sparkled with Swarovski crystals.

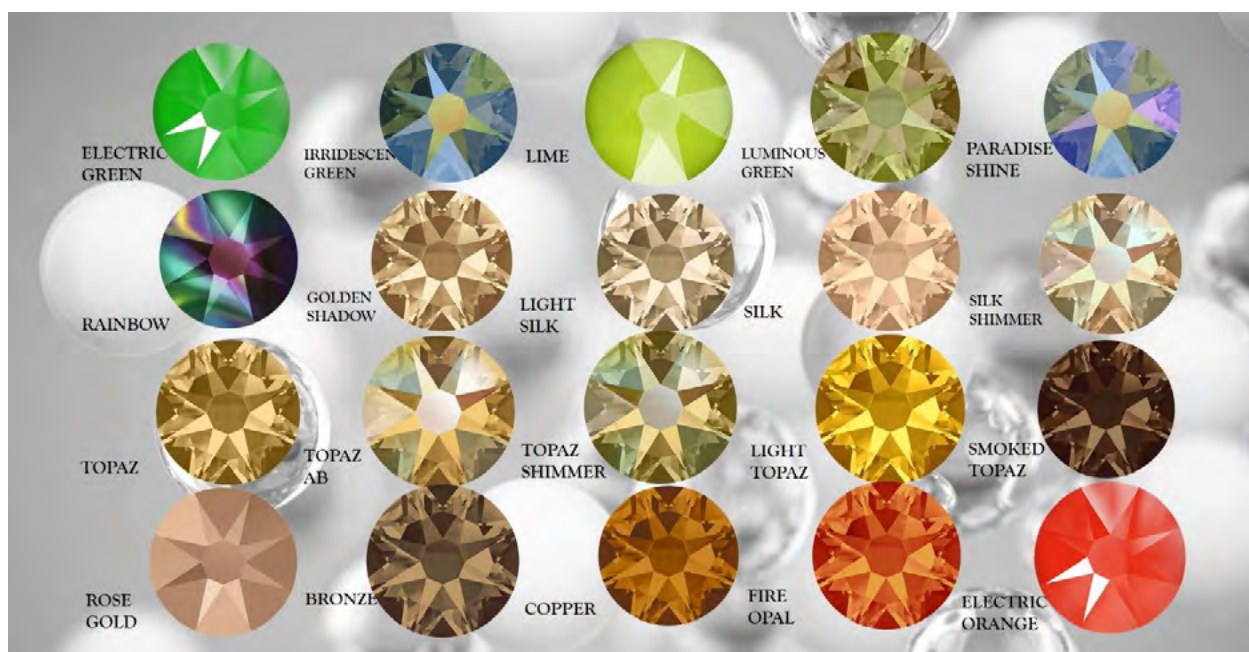
After all the ALL4ME motto is:

#SPARKLE THE MOST!

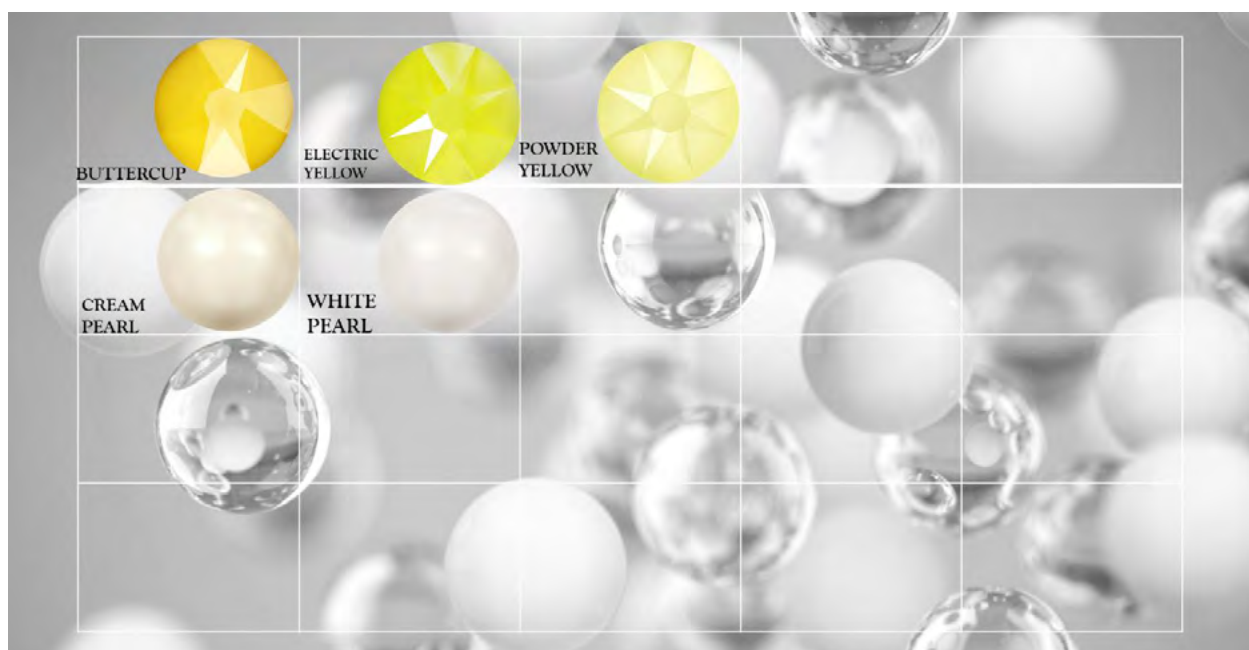
**Swarovski crystals come in a massive range of colours (as well as shapes and even pearls) – see chart following.**

Once you have booked your bikini in with All4me, if you are wanting to add additional crystals to your stagewear, please just email me to discuss. Together we'll work out the best way to achieve your ultimate bikini.











# Bikini Top Styles

---

## Trying to figure out what style for your top? Here are a few things to consider:

1. What Federation are you competing in? Different Federations have different preferences. You should make yourself aware of these prior to selecting your bikini. If you need assistance in this regard, we can help.
2. Do you have natural breasts or implants?
  - If you have implants or large natural breasts you can choose any of the top styles - they'll all look great!
  - If you have small natural breasts then you may want to consider either of Styles No. 2, 4, 5 or 6 below as these styles will provide you lift/support and can easily and comfortably have push-ups added.
3. If you have natural breasts and want to make the most of your cleavage, another important thing would be to ensure that the centre connector (if you are choosing one) is not too wide (keeping it to no wider than 1.5cm is best).
4. If you are doing WBFF, you should have a consultation with us before selecting your top. A WBFF bikini requires more design. Either book directly via email, phone or you can have a consultation at our Gold Coast showroom. I've added some looks for WBFF tops below but the options are endless.

### STYLE NO. 1

## Basic Triangle Design on a Sliding Carriageway Under Bust

**Great style for ICN, NABBA, WFF, IFBB Federations**

- This style has the least coverage and the least support. If think you need more support choose a style with a fixed binding under the bust.
- Top has pockets for insertion of push-ups.

Normal bikini sizes: [8(A), 10(B/C), 12(C/D), 14(D) etc]

**For reference: Triangle measures 14 cm on either side and 16 cm along the bottom on a size 10 top.**



## STYLE NO. 2

### Standard Triangle Design on a Fixed Binding Under The Bust

**Great style for ICN, NABBA, WFF, IFBB Federations**

- As triangle cups are on a fixed binding (they do not slide), this will provide more support than the basic sliding triangle
- Pockets for insertion of push-ups.

Normal bikini sizes: [8(A), 10(B/C), 12(C/D), 14(D) etc]

**For reference: triangle measures 15.5cm on either side and 15cm along the bottom on a size 10 top.**



## STYLE NO. 3

### Shaped Triangle Top on a Fixed Binding Under The Bust

**Great style for ICN, NABBA, WFF, IFBB Federations**

- Perfect if you have implants
- Pockets for insertion of push-ups
- Triangle cups are on a fixed binding (they do not slide). This will provide more support than the basic sliding triangle
- "D" cup will be fine in either a size 8 or size 10 (dependant upon how much coverage you are wanting).

**For reference: Triangle measures 16cm on all 3 sides in a size 10 top.**





**STYLE NO. 4**

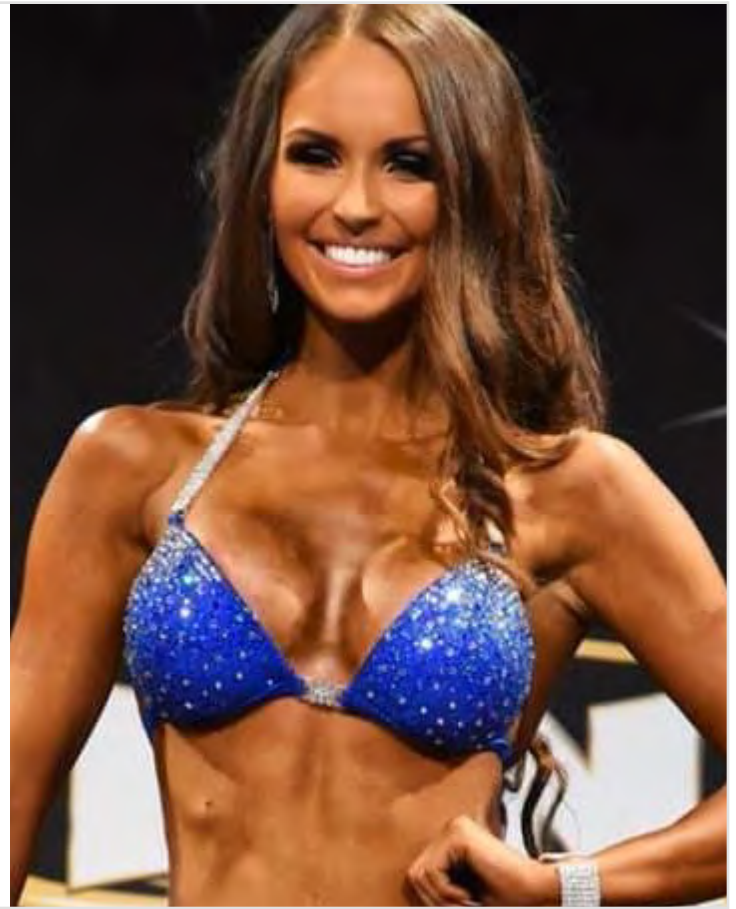
## **Triangle Moulded Cup**

**Great style for ICN, NABBA, WFF, IFBB Federations**

Our most popular triangle style top

- Firm moulded cup that has a fabulous integrated side boost
- Pockets for insertion of additional push-ups if you want
- Can have fabric or clear back strap

Size 8 = A cup, Size 10 = B cup, Size 12 = C cup, Size 14 = D cup



**STYLE NO. 5**

## **Moulded Cup**

**Great style for WBFF**

- A really popular style cup for couture bikinis and works well with all size breasts (small/natural-large implants)
- Shaped moulded cup
- Lots of options for styling - can have clear neck straps/ single side neck detail etc etc. Also can be halter neck design or bra strap design - options really are endless. Also can have clear elastic centre/body drapes ...
- Pockets for insertion of push-ups

Size 8 = A cup, Size 10 = B cup, Size 12 = C cup, Size 14 = D cup, Size 16 = DD cup and Size 18 = E cup.



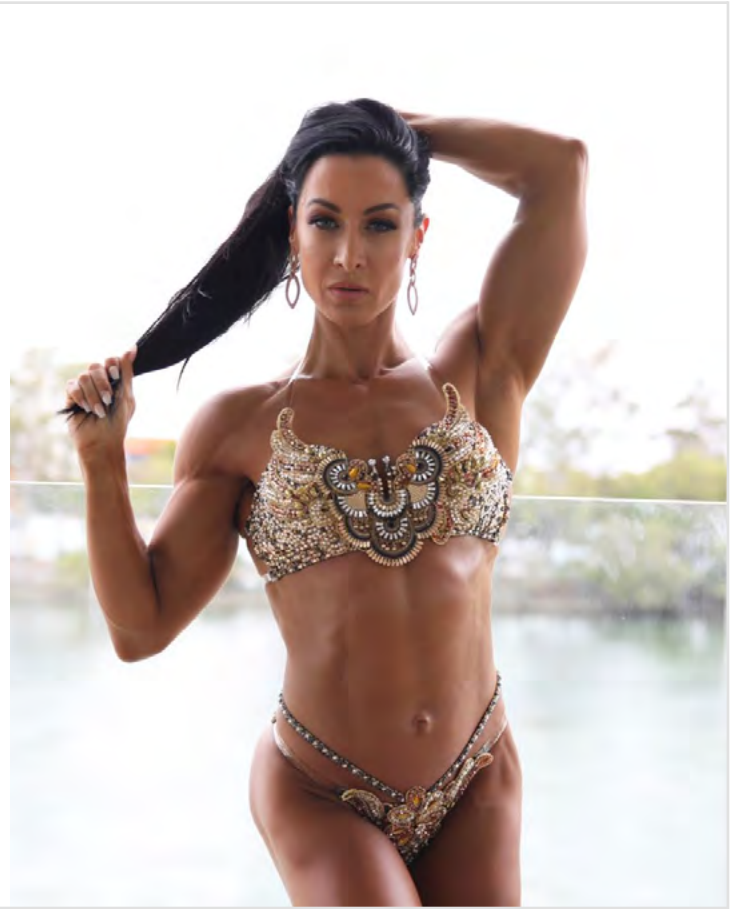
## STYLE NO. 6

### “U” Front Top

#### Great style for WBFF

- Another really popular style cup for couture bikinis and works well with all size breasts (small/natural-large implants)
- Shaped moulded cup
- Lots of options for styling - can have clear neck straps/ single side neck detail etc etc. This style looks great with clear back straps and draped jewel detailing
- Pockets for insertion of push-ups

Size 8 = A cup, Size 10 = B cup, Size 12 = C cup, Size 14 = D cup, Size 16 = DD cup and Size 18 = E cup.

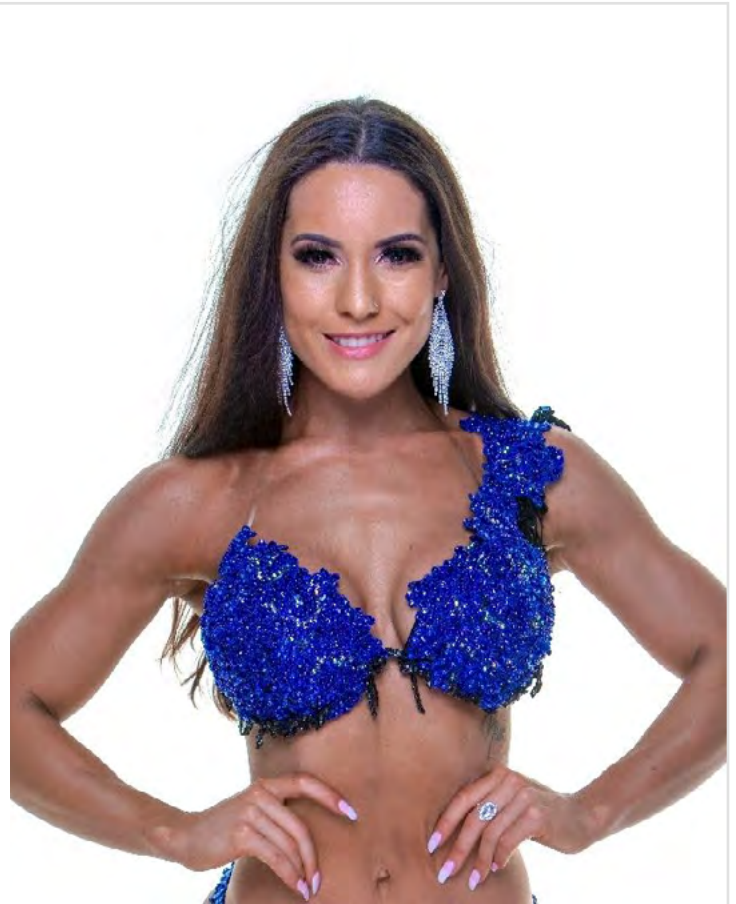


## STYLE NO. 7

### Continuous Underwire

#### Great style for WBFF

- Very popular style cup for couture bikinis and works best with implants
- Shaped moulded cup on a continuous underwire
- Lots of options for styling - can have clear neck straps/ single side neck detail etc etc. Also can be halter neck design or bra strap design - options really are endless.





**STYLE NO. 8**

## **Tasha Top**

**Great style for WBFF**

- Another great style for couture bikinis
- Works best with implants - no support but looks amazing!
- Clear rubber centre/back
- Lots of options for styling - can have clear neck straps/ single side neck detail etc. So many options with this top!



**STYLE NO. 9**

## **Cross-Over Top**

**Great style for WBFF**

- Shaped moulded cup
- Pockets for insertion of push-ups

Size 8 = A cup, Size 10 = B cup, Size 12 = C cup, Size 14 = D cup, Size 16 = DD cup and Size 18 = E cup.



STYLE NO. 10

## Brooke Top

Great style for WBFF

- Great for WBFF
- Works best with implants
- Shaped moulded cups with separate underwires
- Can have clear or fabric centre or can be joined at centre front
- Lots of options for styling - can have clear neck straps/ single side neck detail etc etc. Also can be halter neck design or bra strap design - options really are endless. Also can have clear elastic centre/body drapes ...
- Pockets for insertion of push-ups

Size 8 = A cup, Size 10 = B cup, Size 12 = C cup, Size 14



STYLE NO. 11

## Taryn Top

Great style for WBFF

- Perfect for small or large breasts
- Soft Form Cup – push-ups can be added if needed
- Laces up at front
- 3 adjustable back straps can be fabric/embellished or clear
- Neck Straps/Side Neck detail can be added

Size 8 = A cup, Size 10 = B cup, Size 12 = C cup, Size 14 = D cup, Size 16 = DD cup and Size 18 = E cup.





# Let's Get Creative!

---

You bring me your inspo  
and together we'll bring  
your vision to life!



# Bikini Pant Styles

---

Before selecting the pant style you want you need to take into account the Federation you are competing in and their requirements.

- **IFBB** prefer Euro cut with simple connectors (straight ones/not dangle or draped) whilst the **Elite Pro IFBB** prefer Euro cut with no connectors.
- **ICN, ANB, WFF, INBA & NABBA** are open to all cuts - you just need to choose the best cut for your body.
- **WBFF** are open to all cuts you just need to ensure cut will enhance your body. However, they prefer more coverage on the bum (refer our Cheeky cut).

All of our bikini pant cuts adhere to Australian Federation regulations and all have our sexy scrunch bum.

If you are not sure about what style, contact us and we can assist you to choose the pant style that will be best for you and the Federation requirements.

## STYLE NO. 1

### Pro Cut

#### Great for all Federations

- This style sits on the hips (or a little above if you want).
- They can be made with or without connectors.
- Pants with connectors will be sent to you untrimmed at the back connector so that an adjustment can easily be made either by us or by a dressmaker if necessary.





**STYLE NO. 2**

## **Euro Cut (High Leg/Scoop Front)**

**Great for all Federations**

- This style sits high on the hips and lengthen the legs.
- If you choose to have connectors, pants will be sent to you untrimmed at the back connector so that an adjustment can easily be made either by us or by a dressmaker if necessary.
- This can be made with or without connectors.



**STYLE NO. 3**

## **Brooke Pants**

**Great style for WBFF**

- This style sits high on the hips and lengthen the legs.
- Have the addition of the extra strap - a great styling option.
- Can have connectors added.



STYLE NO. 4

## Crissi Pant (High Leg/ 'V' Front)

Great for all Federations

- This style sits high on the hips and lengthen the legs.
- They can be made with or without connectors and are acceptable in all Federations.



STYLE NO. 5

## Alicia Pants

Great style for WBFF

- This style sits on the hips.
- They have a wider side and provide for lots of good styling options.
- No connectors





# Bum Coverage

---

## STYLE NO. 1

### **Cheeky Cut**

**Great style for WBFF**

Most coverage



## STYLE NO. 2

### **Regular Cut (a.k.a. Pro-Cut)**

**Great style for all Federations**

Sits on hips (or can be worn slightly higher).

Medium coverage



## STYLE NO. 3

### **Euro Cut**

**Great style for all Federations**

Briefest coverage and only can be used in conjunction with the Euro pant.



# Figure Suit Bikini Top Styles

---

Figure suit tops are really the same as bikini top options, but, in the case of a traditional figure suit as are required for WFF, ICN, INBA, IFBB they have the addition of a crossover back strap.

WBFF figure competitors usually opt for the couture/glamour style bikinis, the same as for Bikini Diva & Fitness Diva Competitors BUT if you prefer, you can choose the traditional figure suit style as well.

## When choosing your figure suit top, as for bikini tops, you need to consider:

1. Do you have natural breasts or implants?

- If you have implants you can choose any of the top styles as - they'll all look great!
- If you have small natural breasts then you may want to consider either Style No. 2 or 4 below as these styles will provide you lift/support and can easily and comfortably have push-ups added.

2. If you have natural breasts and want to make the most of your cleavage, another important thing would be to ensure that the centre connector is not too wide (keeping it to no wider than 1.5cm is best). This is not so important if you have implants but still something you should take into consideration when placing your bikini order with us.

3. If you are doing WBFF FIGURE, it'll be best to have a chat with me before selecting the style top you want. These bikinis require more design so are definitely best either booked directly with me via email, phone or you can come and see me at my Gold Coast Showroom. WBFF Figure bikinis are usually in the style of the couture bikinis (same as worn by both WBFF Bikini, Wellness & Fitness). However, if you prefer they can also be the traditional figure style (pics following), the options are endless.





### STYLE NO. 1

## Basic Triangle Design on a Sliding Carriageway Under Bust

**Good for ICN, NABBA, WFF, IFBB Federations**

- This style has the least coverage and the least support (choose a style with a fixed binding under the bust if you think you may need support in the top).
- Top has pockets for insertion of push-ups.

Normal bikini sizes: [8(A), 10(B/C), 12(C/D), 14(D) etc]

**For reference: Triangle measures 14 cm on either side and 16 cm along the bottom on a size 10 top.**



### STYLE NO. 2

## Standard Triangle Design on a Fixed Binding Under The Bust

**Good for ICN, NABBA, WFF, IFBB Federations**

- Provides more support than the basic sliding triangle
- Pockets for insertion of push-ups.

Normal bikini sizes: [8(A), 10(B/C), 12(C/D), 14(D) etc]

**For reference: triangle measures 15.5cm on either side and 15cm along the bottom on a size 10 top.**



### STYLE NO. 3

## Shaped Triangle Top on a Fixed Binding Under The Bust

- Perfect if you have implants
- Pockets for insertion of push-ups
- “D” cup will be fine in either a size 8 or size 10 (dependant upon how much coverage you are wanting).

**For reference: Triangle measures 16cm on all 3 sides in a size 10 top.**



### STYLE NO. 4

## Triangle Moulded Cup

**Good for ICN, NABBA, WFF, IFBB Federations**

- Firm moulded cup that has a fabulous integrated side boost
- Pockets for insertion of additional push-ups if you want

Size 8 = A cup, Size 10 = B cup, Size 12 = C cup, Size 14 = D cup





# Figure Pant Options

---

We have 3 basic styles of Figure Suit Pants as shown below but as your suit will be custom made for you, if you have any specific requirements, then please just let me know.

Figure suit pants are usually worn high on the hips to elongate the legs. They can have variations such as side seams, thin binded straps at the sides or connectors. Also can have a “V” shape at front of pants or a rounded shape.

Bum cut is either regular or pro-cut (pro-cut being the briefest cut).

All have the All4me scrunch bum.

## STYLE NO. 1

**These pants can be made up in a few different ways:**

- Scoop/rounded front
- V front
- Side seams
- Thinner/binded sides
- Addition of Connectors



**Scoop/Rounded Front &  
Side Seams**



**“V” Front & Thin Binded  
Sides**



**Scoop/Rounded Front +  
Connectors**

STYLE NO. 2

## Pants with 3 Binded Straps On The Side

(Pants in pic have regular cut bum)



STYLE NO. 3

## Pants with 3 Binded Straps On Both Sides Of Front Of Pants





# Figure Pant Bum Coverage

---

STYLE NO. 1

**Regular Bum**



STYLE NO. 2

**Pro Cut Bum**



# WBFF Couture Bikinis

---

All4me Couture Bikinis are not “off the rack” bikinis. Each one is custom made and handcrafted by me and my awesome team. Only the best quality fabric/crystals/laces etc are used so you can be sure that when you purchase All4me Stagewear you are getting the very best and you will definitely sparkle on stage come comp day!

Prices for these types of bikinis depends upon level of crystallizing & design required however because I will be custom making your stagewear, I will work with you to create as much sparkle as I possibly can whilst staying within your budget. As a general guide though, most WBFF bikinis are priced between \$750-1550+ (AUD) with the majority of bikinis being in the price bracket of \$950-\$1250.

When you place your order with me (which, for these types of bikinis is best done either in person or via email/telephone), we will first discuss what styles you like/what level of crystallizing you are wanting and also what your budget is.

There are so many style options when creating your WBFF Stagewear that its always a great idea to gather your inspo and send it to me as a starting point. It doesn't matter if pics you gather are my designs or not – your inspo will be used to put **our own** look together for you. Once I have an idea of design aspects you like, then we can get busy creating something that is uniquely your own!

**View our Gallery of Couture Bikinis [Here!](#)**



# Onepiece Swimsuit Model

---

Our beautiful onepiece swimsuits are all custom made so once an order is placed, please send me an email with the following information:

- CUP SIZE:
- DO YOU HAVE IMPLANTS? Yes/No
- HIP MEASUREMENT (Taken on the hip bone – not the glutes. A measurement is needed all the way around your body with tape measure sitting on your hip bones)
- BUM MEASUREMENT (Taken around the entire body at the widest part of glutes)
- USUAL BIKINI SIZE (TOP & PANTS)
- Measurement from the crotch seam (or where that would be between your legs) running up your front to the point between your breasts where the centre-front of your bikini would be.

Our halterneck onepieces also come with the option of a **removable back strap**. The back strap hooks into the sides of the onepiece via 2 small loops just under the breast. This serves the purpose of (a) pulling the onepiece in at the sides to enhance shape particularly if you have small/natural breasts and (b) reducing the gap that can be created between breasts and midsection if you have implants. If you don't want a fabric backstrap you can also opt for a clear one. Also, if you don't want to use the back strap, it is easily unclipped from the sides.

Most styles look great whether you have large breasts/implants or small. If you are not sure what style is going to work best for you, just email me and I'll be able to help you with selection. If you have smaller breasts though, I'd probably stay away from the Deep "V" style. All of the other styles though, will be fine – particularly with the addition of the removeable back strap which will pull your onepiece in at the sides to create a nice shape.

We also give you the option of a "scrunch bum" or a regular cut bum. The scrunch does give a good shape to glutes and is probably the most common option but if you don't want to go with a "scrunch" then just select "no" for this option when ordering via my website.

Adding additional sparkle to your onepiece is also an option – either by way of neck connectors/centre connector or applying Swarovski crystals.

If you have any queries or you'd prefer to place your order for a onepiece directly with me (or if there is a particular design onepiece you are wanting that's not shown on my website), please just email or call me – happy to help.

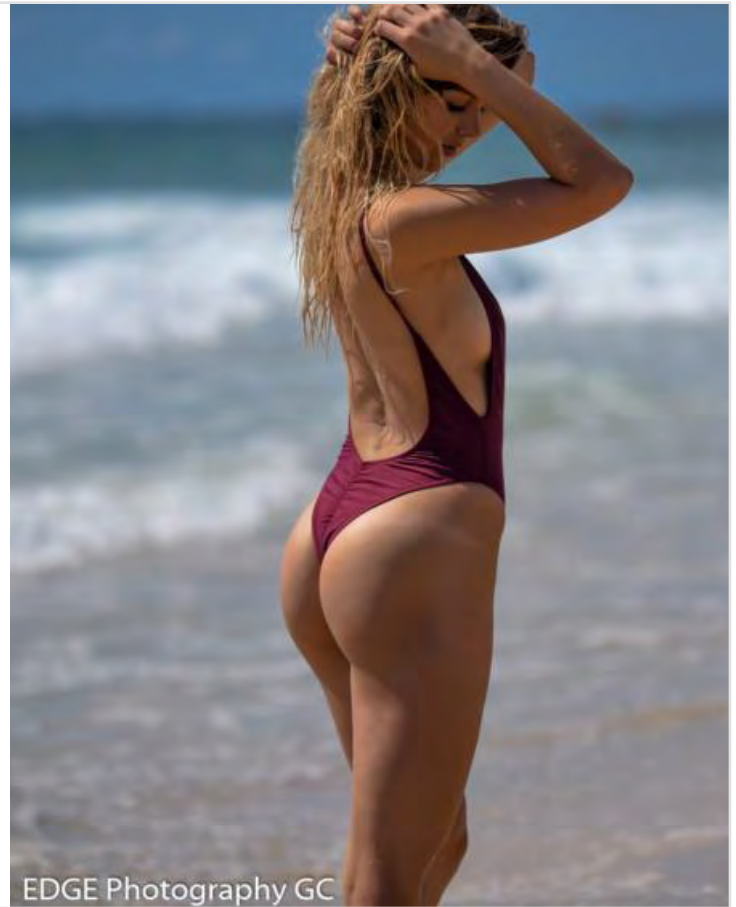




STYLE NO. 1

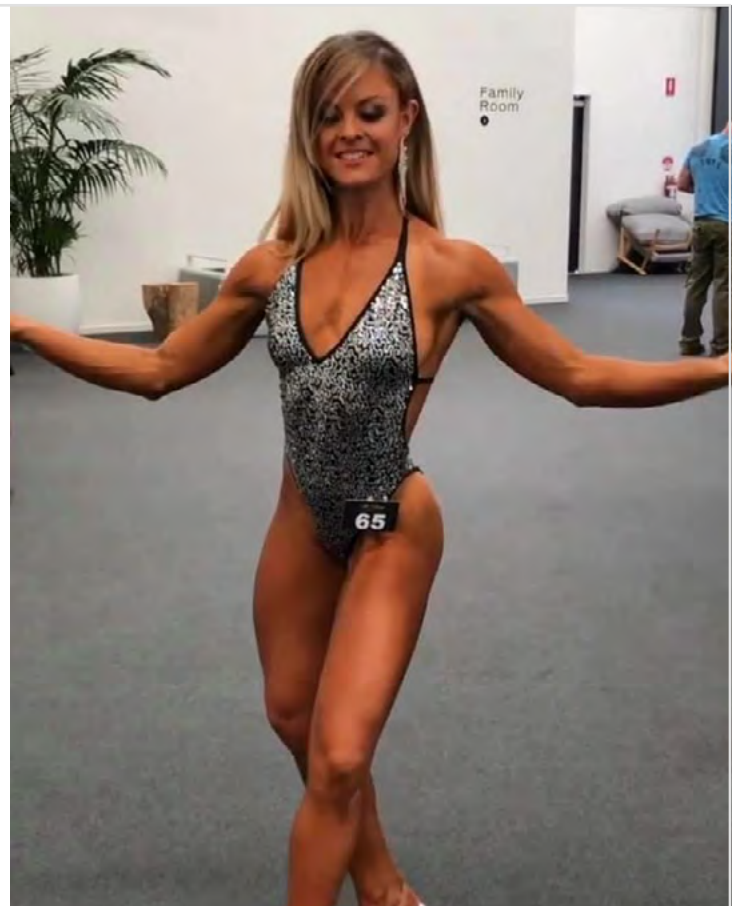
## Regular Onepiece with Adjustable Shoulder Straps

Onepiece with shoulder straps. Shoulder straps are adjustable.



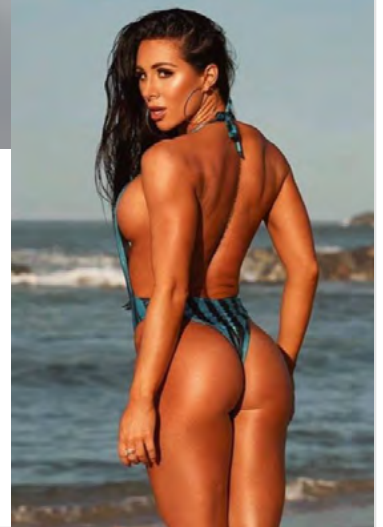
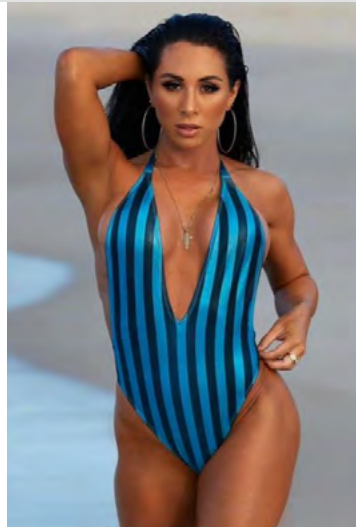
STYLE NO. 2

## Halterneck Onepiece with Optional Removable Back Strap



STYLE NO. 3

**Deep V Halterneck Onepiece  
with Optional Removable  
Back Strap**



STYLE NO. 4

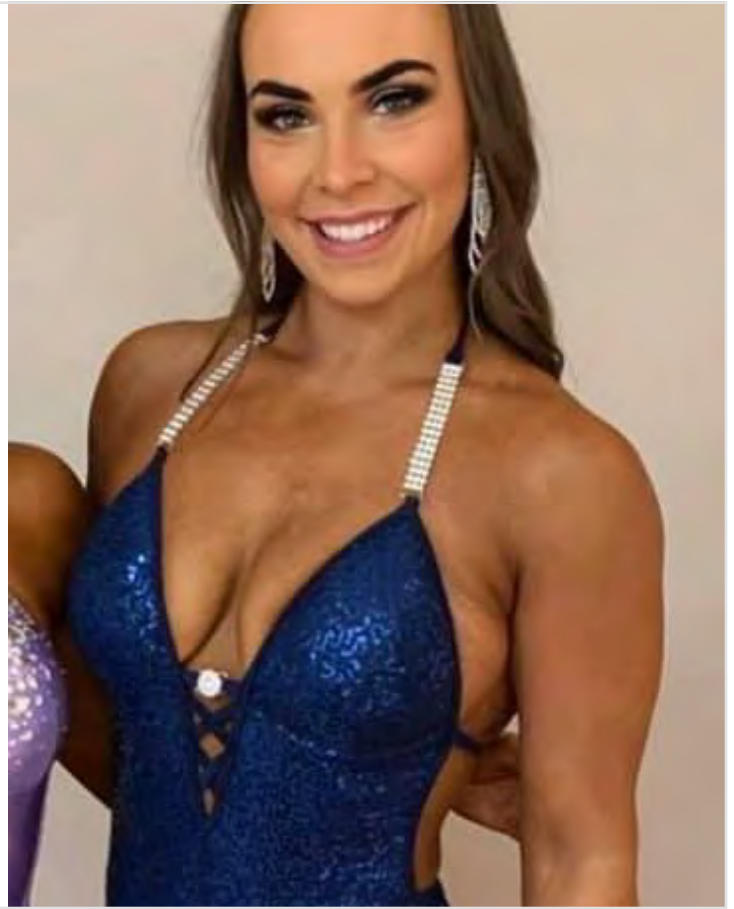
**Deep V Halterneck Onepiece  
with Centre Connector and  
Optional Removable Back  
Strap**



STYLE NO. 5

## Moulded Cup Onepiece with Optional Removable Back Strap

- Firm moulded cup that has a fabulous integrated side boost
- Pockets for insertion of additional push-ups if you want
- It needs a back strap in order to provide you with boob support you can choose to have fabric or clear back strap



STYLE NO. 6

## Soft Form Cup Onepiece – Deep V with Centre Connector and Optional Removable Back Strap





STYLE NO. 7

## Criss-Cross with Optional Removable Back Strap



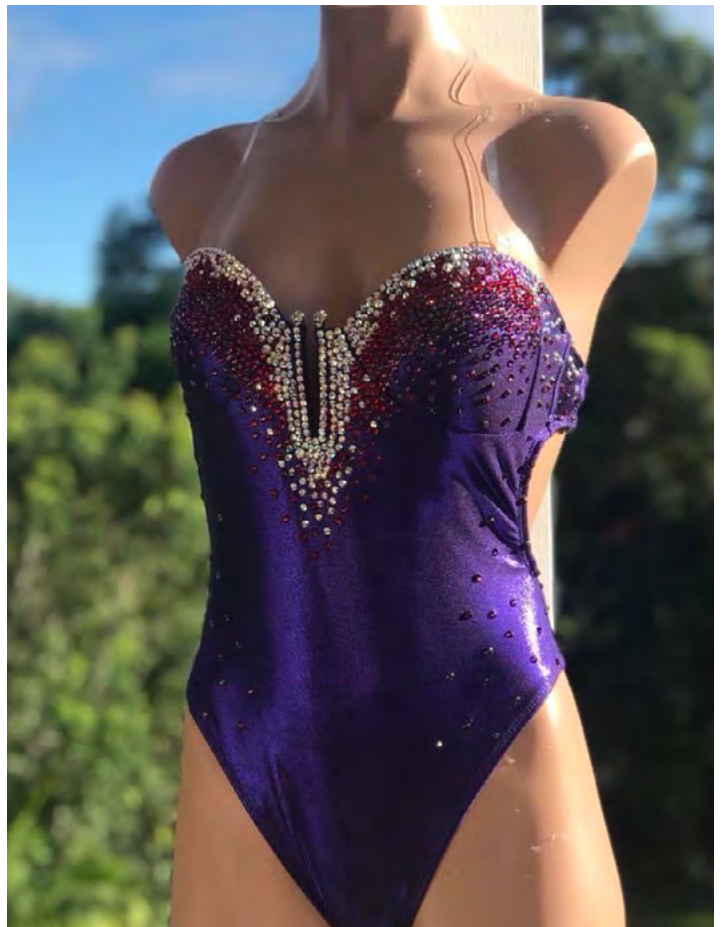
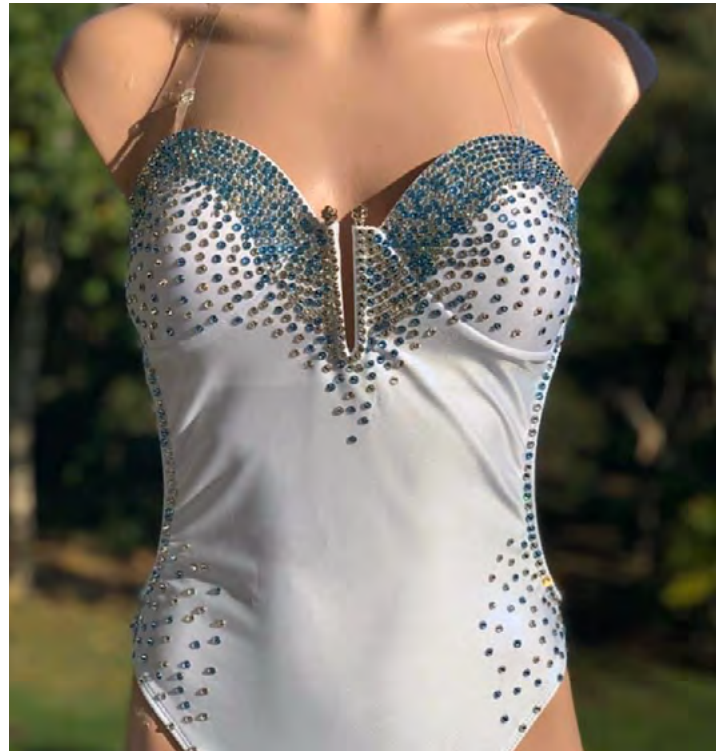
STYLE NO. 8

## “U” Top



# Crystals Can Be Added To Your Onepiece

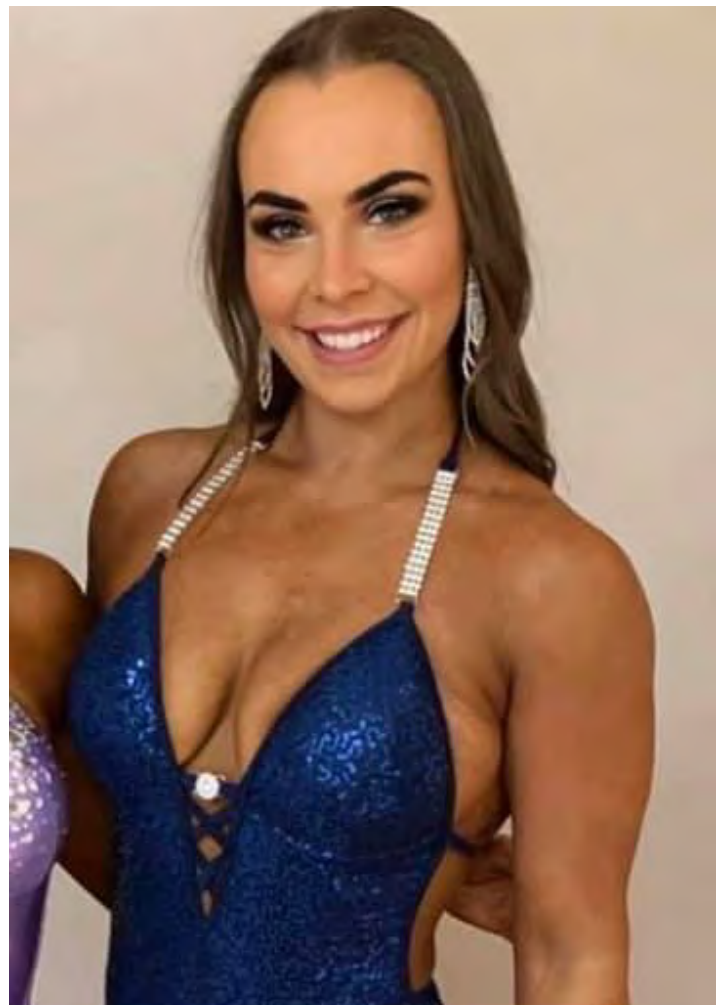
---





## Neck Connectors are also an option

---





# ALL4ME Themewear

---

Designed for you – from your vision and our creativity!

We will work with you to provide you with stagewear that will not only stand out from the rest but will be of the highest quality & workmanship.

**All4me has produced Best Themewear Award winning costumes for our clients multiple times!**

We are only able to take on a certain number of themewear costumes each comp so it's advisable to contact me to book your themewear order in asap.

If you'd like us to design your next themewear, the best option is to email/call me to discuss. I can help you with design options etc once I know what you have in mind and the budget you give me to work with.

**View Our Themewear Gallery [Here!](#)**



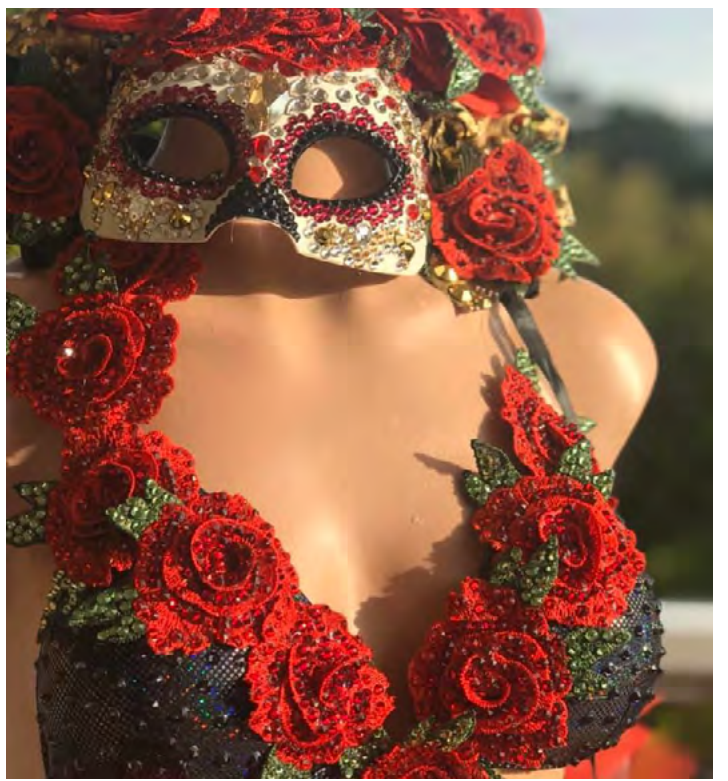
# Custom Heels, Headpieces, Props and Jewellery

---

We can also custom create matching heels, jewellery, headpieces – you name it!









# Posing Suits/Practice Bikinis

---

Reversible Neon Pink/Sexy Neon Animal Print

**Perfect for posing practice/check-ins**

Top is a triangle style on a sliding carriageway under bust.

Pants are super cheeky

**Available in: Neon Yellow, Neon Orange, Neon Green & Lilac**

All4me custom bikinis are 100% Australian Made and are custom designed just for you from luxurious Italian Lycra.

In addition, if you'd like a posing bikini made up into a particular style and/or colour – just let us know – that can be arranged also.

**To View Our Posing Bikinis [Click Here!](#)**



# Body Building Trunks

---

Fabric options for trunks can be viewed at this link: [FABRICS](#)

We have 3 styles of Body Building Trunks – suitable for ICN, WFF, IFBB, NABBA - available as follows:

## STYLE NO. 1

### Procut

This style has the most coverage

-Now with a Scrunch Bum to enhance shape of glutes-





STYLE NO. 2

## Ultra Procut

This style has medium coverage.

-Now with a Scrunch Bum to enhance shape of glutes-

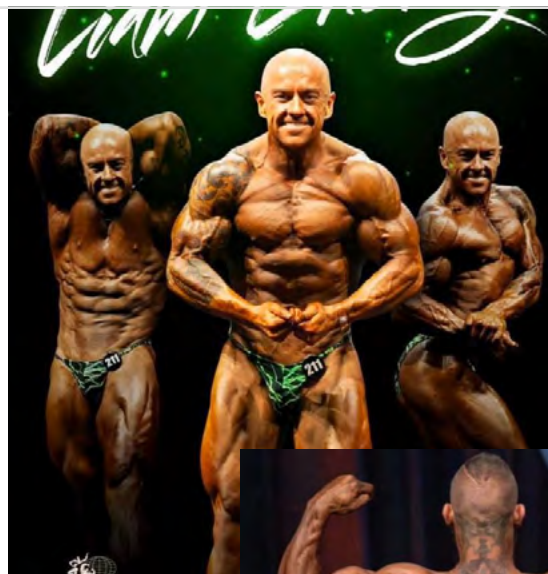


STYLE NO. 3

## Xtreme Pro

Least coverage – perfect for showing of great glute development!

-With Scrunch Bum-





# WBFF Square Trunks

---

These are custom created trunks made especially for you and to meet WBFF Federation requirements. You can choose whatever fabric combo you like – just check out our Fabric options here: [FABRICS](#)

Also, if you have a style trunk that you like that is not shown here – send me a pic.

STYLE NO. 1



STYLE NO. 2



STYLE NO. 3



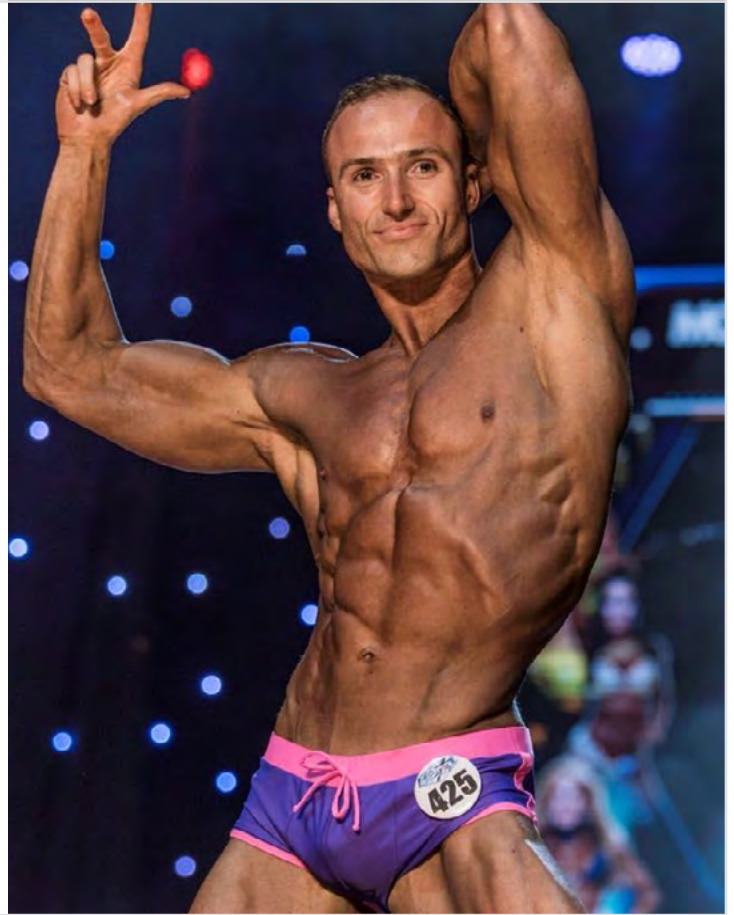
STYLE NO. 4



STYLE NO. 5



STYLE NO. 6



STYLE NO. 7





STYLE NO. 8



# Options For WBFF Trunks

---

You can add embellishments like diamantes or use sequin fabric - the sky's the limit really. Here's a bit of inspo:









# Stage Heels

---



We also sell the complete range of footwear from Pleaser USA (which include brand names Fabulicious, Devious, Bordello, Demonica). If you want a pair of shoes that's not shown on our website, if they are available to order from Pleaser USA, we'll be able to get them in for you, so please - just ask.

For competition purposes, the different Federations have a few rules as far as shoe styles are concerned. If unsure, talk to me.

Clear shoes are intended to elongate your legs. It is advisable that you purchase your shoes as soon as possible after you decide to compete. The longer you have to practice in your heels, then the better your stage routine is going to be.

Ankle straps – Yes or No? Whether you choose a shoe with an ankle strap or not is really up to you but you do need to consider how well you can pose in heels. It is far better to choose shoes with an ankle strap if this gives you added confidence and you are going to be able to move/pose better in them. After all, this is what you are being judged on.

IFBB prefer you to wear clear heels, with a heel height of no greater than 5 inches and a platform of ¼ inch.

**View IFBB Approved Heels [HERE](#)**

NABBA/WFF/ICN/MISS FITNESS AUSTRALIA/ANB all require you to wear clear heels. Whilst there is no real restriction on heel height, it is advised that you choose a heel height that you can comfortably walk in and really it is best to keep heel height between 4-6 inches.

**View Clear Stage Heels [HERE](#)**

# WBFF Heels

---

WBFF prefer a fashion style heel (rather than the clear ones) so the options are endless.

We have a massive range of heels on our website for you to choose from. Also, we offer heel embellishment – we'll bling up your shoes to match your bikini – a great option!

If you want me to embellish your heels to match your bikini, I will first need to know what sort of shoes you are wanting – have you already purchased a pair or do you want me to assist you in choosing an appropriate style? I'll also need to know how blinged you want your heels to be – prices for this service will range from \$150 upwards. **Some pics/inspo can be seen on our website - [HERE](#)**

Ankle straps can be added to most styles as well – we sell clear ankle straps that can be used with most styles.



# FAQs

---

## **When should you order?**

The sooner you book your bikini/stagewear in the better as this will ensure you get the fabric and connectors of your choice. As we get closer to comp time, supply of different products sometimes becomes an issue. Your measurements can be confirmed at a later date (best no later than 4 weeks out from comp). Generally though, booking your bikini in around 8-12 weeks out is best.

## **Can I book a fitting with you?**

Absolutely! If you live locally, we can book an appointment for you to come and see me. Because I work from a home-based showroom, I'm pretty flexible with appointment times.

## **What if I live too far away to come and see you?**

If you don't live locally, I'm very happy to work with you via email/sms. All4me bikinis & stagewear are shipped worldwide.

## **Do you offer payment plans?**

You are welcome to pay off your stagewear (costumes). Balance just needs to be paid in full prior to final delivery of costume(s) to you.

## **What if I live too far away to come and see you?**

If you don't live locally, I'm very happy to work with you via email/sms. All4me bikinis & stagewear are shipped worldwide.

## **What if I need adjustment closer to my comp date?**

There is an option on our website, when placing your bikini order, to send us a final hip measurement 4 weeks out. In addition, most of our bikinis have pants that are easily adjustable by a seamstress if need be.

## **Fabric Samples:**

If you would like a sample of any of our fabrics – just email me and I'll be happy to send you a swatch.

## **Care Instructions:**

Our stage bikinis are of course very delicate and should be treated with lots of TLC. It is recommended that you handwash your bikini after use using pure soap flakes (eg Lux) dissolved. To remove any stubborn tan marks, just very gently rub. Do not machine wash or soak your bikini.



**Contact me today so we can get  
started on your dream bikini!**

*Anne - All4me*

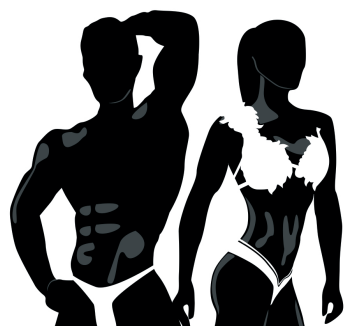
*xxx*

Ph: 0418745561

Email: anne@all4me.com.au

Instagram: @all4meonline

Facebook: @all4me.com.au



**all4me**

**WEAR THE BEST SPARKLE THE MOST**